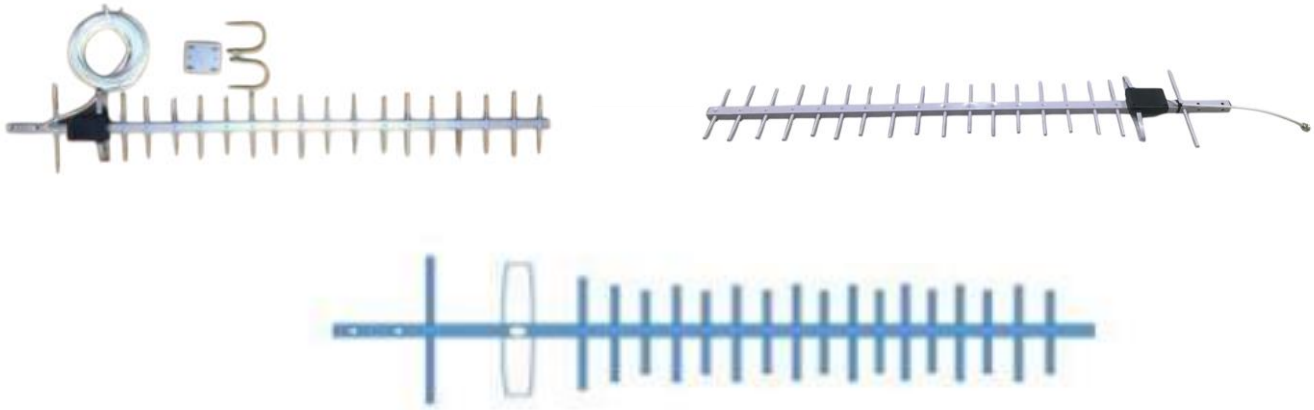


SOLID ELEMENT DIRECTIONAL YAGI ANTENNA - 21 dBi



Technical Specifications	
Frequency Range	824-960/1710-2500 MHz (Dual Band)
Gain	21 dBi
VSWR	≤ 1.5
Return Loss	-15dB
Impedance	50Ω
Lightening Protection	Direct Ground
Maximum Input Power	250 W
Polarization	Vertical or Horizontal
Radiation direction	Directional
HPBW	H:80°; V: 60°
Front To Back Ratio	16 dB
Mechanical Specifications	
Cable	RG58 10 Mtr or Customized
Connector	SMA M(Movable) or Customized
Antenna Dimension(mm)	1140*210*35
Boom Pipe, Reflectors	Aluminum
Support Boom Diameter	20 mm (Al-Square pipe)
Elements Diameter	7 mm (Al-Round Pipe)
Wind Pressure	200km/h
Radiating Material	Copper
Environmental Friendly	ROHS Compliant
Operating Temperature (°C)	-40°C ~ 85°C
Humidity	5~95%
IP Rating	IP65