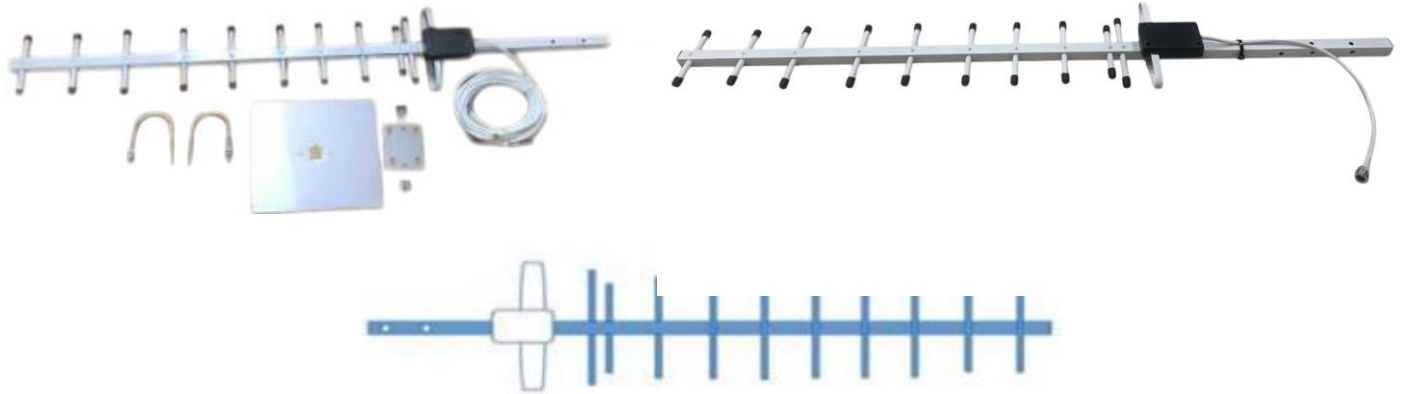


# SRFS TELEINFRA

Get connected with us:



## DIRECTIONAL YAGI ANTENNA - 18 dBi (824-960/1710-2500 MHz)



Electrical Specification	
Frequency Range	824-960/1710-2500 MHz (Dual Band)
Gain	18 dBi
VSWR	<1.5
Return Loss	-15dB
Impedance	50Ω
Lightening Protection	Direct Ground
Maximum Input Power	250 W
Polarization	Vertical or Horizontal
Radiation direction	Directional
HPBW	H:80°; V: 60°
Front To Back Ratio	16 dB
Mechanical Specification	
Cable	RG58 10 Mtr or Customized
Connector	SMA (M) or Customized
Antenna Dimension(mm)	1040*210*35
Boom Pipe, Reflectors,	Aluminum
Support Boom Diameter	20 mm (Al-Square pipe)
Elements Diameter	7 mm (Al-Round Pipe)
Wind Pressure	100km/h
Radiating Material	Copper
Operating Temperature	-40°C ~85°C
Humidity	5~95%
ROHS	Compliant

Add: plot no 10 shiv vihar a block Najafgarh Sahibi river road Vikasnagar Uttam nagar new delhi-110059

+91-9027232570, +91-8800726650, +91 8076749052 info@srfsteleinfra.in, info@srfsteleinfra.com, srfsteleinfra@gmail.com

www.srfsteleinfra.in, www.srfsteleinfra.com

SRFS Teleinfra | All specifications are subject to change.  
SRFS reserves the right to make such changes as required. Unless otherwise stated, all specifications are nominal.  
It may be necessary to make modifications to the part and/or the documentation of the part to implement improvements.  
See www.srfsteleinfra.in for the most current information. Revised: 19 Jan 2023

