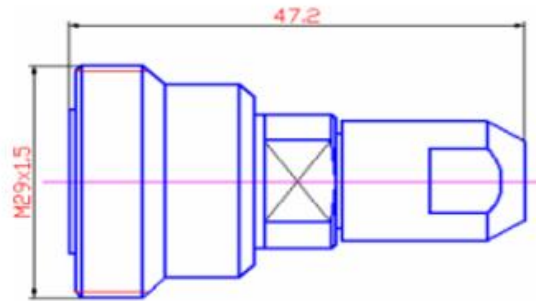


7/16 DIN Female Connector for 1/4" SF Cable



| Electrical & Mechanical Specifications | | |
|--|--|-----------|
| Frequency Range | DC 7.5 GHz | |
| Characteristic Impedance | 50 Ω | |
| VSWR | ≤1.10@DC-3000MHz | |
| Dielectric Withstanding Voltage | 4000V rms,50Hz, at sea level | |
| Insertion Loss | ≤0.10dB@2200MHz | |
| Intermodulation 3rd | ≤ -157dBc@2×20W | |
| Working Voltage | 2700V RMS,50Hz, at sea level | |
| Contact Resistance | Center Contact ≤0.4mΩ Outer Contact ≤ 1.0mΩ | |
| Durability | Mating cycle ≥500 | |
| Material & Plating | | |
| | Material | Plating |
| Body | Brass | Tri-alloy |
| Insulator | PTFE | - |
| Center Conductor | Phosphor Bronze | Ag |
| Environmental | | |
| Temperature Range | -40°C~+85°C | |
| RoHS | Compliant Yes | |