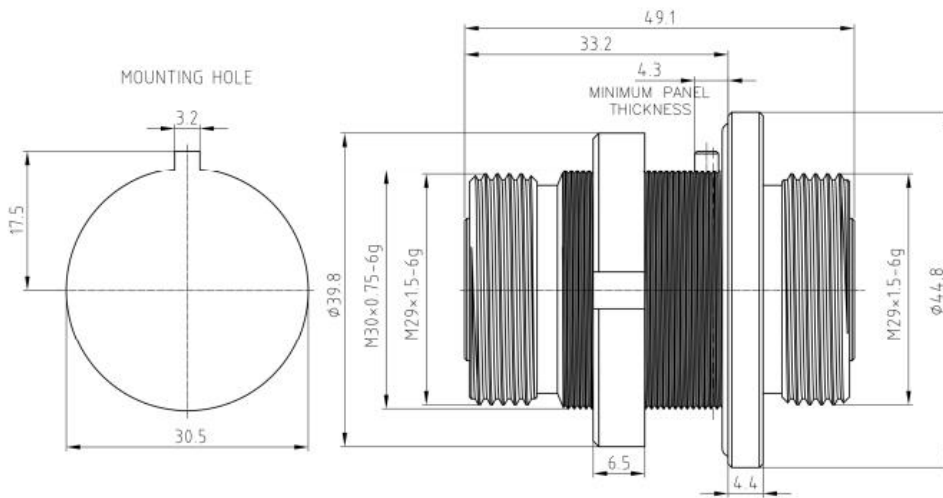


## Low PIM DIN 7/16 Female to DIN 7/16 Female Bulkhead Adapter



| ELECTRICAL SPECIFICATIONS |                              |
|---------------------------|------------------------------|
| Impedance                 | 50 ohm                       |
| Frequency Range           | DC-6 GHz                     |
| VSWR                      | 1.25 max                     |
| PIM (Intermod)            | -160dBc min with 2x20W tones |
| Operating Temp            | -40°C ~ +125°C               |
| RoHS                      | Compliant                    |
| MATERIAL & PLATING        |                              |
| Connector Body            | Ternary alloy plated brass   |
| Center Contact            | Silver plated brass          |
| Insulator                 | PTFE                         |
| Weight                    | 230g                         |