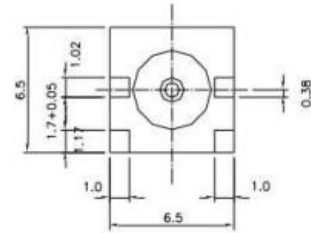
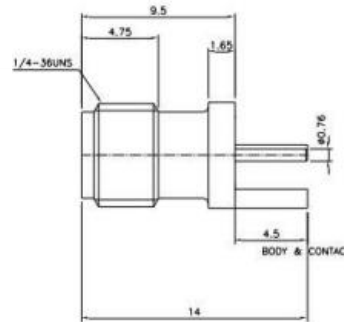


SMA Female End Launch 1.6T(SRFS-SMAFE 01.6)



ELECTRICAL & MECHANICAL SPECIFICATIONS		
Frequency Range	DC-12.4GHz	
Insertion Loss	≤0.15dB/6 GHz	
VSWR (max)	≤1.10 @DC-3GHz; ≤1.25 @DC-6GHz;	
Dielectric Withstanding Voltage	≥2500V RMS,50Hz,at sea level	
Working Voltage	1000V RMS,50Hz,at sea level	
Characteristic Impedance	50 Ω	
Contact Resistance	Center Contact ≤3.0mΩ Outer Contact ≤2.5mΩ	
Dielectric Resistance	≥5000MΩ	
RF Leakage	-60dB Min, 2~3 GHz	
Coupling Nut Torque	12 Ncm-170 Ncm	
Durability	Mating Cycles ≥500	
Material & Plating		
	Material	Plating
Body	Brass	Au
Insulator	PTFE(Teflon)	-
Center conductor	Phosphor bronze	Au
Environmental		
Temperature Range	-40°C~+85°C	
RoHS	Compliant Yes	